



Mississippi man rehabs after rescue

Missions to spread the message of healing

Local physician, BCHS students go abroad for healing

BCHS partners with SEEDS Ministries for Mexico mission

On April 23, 26 students, faculty and staff departed for Ometepec, Mexico to minister to the Amusgo Indians. Ometepec is approximately 250 miles south of Acapulco in the mountains.

Students from the Baptist College of Health Sciences pose for a group photo during their medical mission to Ometepec, Mexico. Twenty-six students, faculty and staff ministered to the Amusgo Indians about 250 miles south of Acapulco. Many walked 3-4 hours to receive medical care.



Everyone on the team carried medical supplies for the week to use in free medical clinics and camps conducted in the nearby villages.

Many of the poor had to walk three to four hours to obtain medical assistance.

Karen Smith, director of campus ministries at the College, coordinated the trip with Dr. David

(Continued on page 5)

A mission to help others

Edward Cattau Jr., MD, Memphis Gastroenterology Group, recently returned from a medical mission trip to El Salvador. A veteran of several mission trips, it was Cattau's first with the Christian Medical & Dental Associations.

The Christian Medical & Dental Associations exist to motivate, educate, and equip Christian physicians and dentists to

(Continued on page 5)



Ed Cattau, MD

Spring Above & Beyond campaign set to begin

The Baptist Memorial Health Care Foundation's Above & Beyond campaign has begun systemwide.

It is the second year for the campaign systemwide.

"The theme this year is 'giving green can change a life,'" said Jay Atkinson, development officer for the Foundation. "Colleagues have been extremely generous this year, giving to many different causes and endeavors, and we want to thank



them for that."

Given colleague contributions and efforts to benefit United Way, Habitat for Humanity, Above & Beyond and Baptist Trinity Hospice House, the Foundation is taking this time to show its appreciation for the sacrifices colleagues have made this year.

Last year's Above & Beyond campaign raised nearly \$450,000 to benefit myriad programs that receive Foundation assistance, such as the Baptist Centers for Cancer Care, Baptist Heart Institute, Employee Emergency Assistance fund and the Patient Care Assistance fund.

"We want to take the opportunity during this campaign to spread the word about the Foundation and its programs," said Jenny Prascher, director of development for the Foundation. "In addition, we also want to welcome new colleagues to the Foundation and encourage them to give a small amount to the program of their choice. Of course, we also want colleagues who are currently giving to continue to do so."

One hundred percent of colleagues' donations go to benefit

(Continued on page 5)

GuideStone Annuity Representative Schedule

Dates and times are subject to change. Please contact your facility's human resources office for information. Baptist colleagues can contact Ken Peavy at 901-226-3518 or e-mail Ken.Peavy@GuideStone.org, contact April Mollerberg at 901-226-3516 or e-mail April.Mollerberg@GuideStone.org.

June 15Baptist Memphis	June 23Baptist Corporate Building
June 16Baptist LauderdaleBaptist DeSoto
.....Baptist DeSotoBaptist North Mississippi
June 17Baptist Women's Hospital	June 24Baptist Huntingdon
.....Baptist Union County	June 25Baptist Union City
June 18NEA Baptist	June 26Baptist Memphis
June 18-19Baptist Golden Triangle	June 29Baptist Memphis

Employee Opinion Survey dates

Survey dates – colleagues may take the survey at any Baptist location –

Hospital	Survey dates
Baptist Collierville	June 6, 10 and 18
Baptist DeSoto	June 9
Baptist Rehab-Germantown	June 10 and 11
Baptist Huntingdon	June 9 and 12
Baptist Lauderdale	June 1 through 7
Baptist Memphis and Restorative Care Hospital	June 6, 9, 10, 11, 12 and 14
Baptist Tipton	June 6, 8, 12, 14 and 17
Baptist Trinity Home Care and Hospice	June 12
Baptist Union City	June 10 and 18
Baptist Women's Hospital	June 12 and 19
NEA Baptist Hospital	June 13

Specific survey times will be communicated at each entity. All surveys are anonymous.

Baptist Memorial Hospital-Memphis will host free educational seminars on surgical weight loss options in the hospital's seminar rooms on Monday, June 8, at 7 p.m., Saturday, June 20, at 10 a.m. and Monday, June 29 at 7 p.m. During the seminars, Dr. George Woodman will address the benefits and risks of weight loss surgery and its growing use for the treatment of morbid obesity. The seminars are part of the **Baptist Weight Loss Center**, which offers options to help individuals whose body mass index indicates they are either overweight or obese. No reservations are required. All three seminars will take place in seminar rooms two and three. For more information about Baptist's educational seminars or the Baptist Weight Loss Center, please visit memphis.baptistonline.org or call 901-226-LOSE.

**BMHCC Helpline/Hotline
877-BMH-TIPS**

If you have a question about legal or regulatory requirements, suspect any violation of BMHCC Standards of Conduct, legal or regulatory requirements or suspect that anyone is committing acts of patient abuse in any form, call 877-BMH-TIPS. Reports to the hotline may be made anonymously. Calls are handled confidentially to the extent allowed by law. Baptist does not tolerate retaliation for reports made in good faith. It is the policy of Baptist Memorial Health Care to admit and provide services to patients and guests without distinction due to race, color, age, religion, sex, national origin, handicap or disability. Marilyn Dunavant is Baptist's corporate compliance officer.

Ascribe to the Lord the glory due His name.

PSALM 96:7

Leader recently listed the three Baptist nurses named as part of the Metro Excellent 11. In addition to Baptist clinicians listed in the Top 100 nurses in Shelby and Fayette counties, three were selected among the Excellent 11, honoring 11 nurses as the best of the best. **Larceina Ricks, Baptist Memphis; Cyndi Godley, Baptist Women's Hospital; and Ann Warblow, Baptist College of Health Sciences** were three Baptist colleagues named to the Excellent 11 list. Each year, Celebrate Nursing, a nursing support and advocacy group for Shelby and Fayette county nurses, selects the top 100 nurses in the area. From that list, the organization then names its Excellent 11. In this issue, we highlight Cyndi Godley.



Cyndi Godley

- 1. What place does this honor have in your professional career?** I still can't believe I was selected as one of the excellent 11. This is an honor. I feel appreciated and supported by my peers.
- 2. Why did you decide to become a nurse?** I wanted to be able to help people. I had taken first aid courses at the red cross to help out at church youth camps, Girl Scouts. I had spent time with my grandmother taking care of her during her battle with cancer. I always wanted to be able to help people and decided to go back to school and learn about nursing so I could be better equipped to help make a difference in peoples lives. I am interested in medical missions, and community service and I felt this would be a way to really help out.
- 3. What is the most rewarding part of your job?** Working at the bed side, getting to know the patient and family members, working with them, encouraging them and helping them as they deal with their illness.
- 4. What part of being a nurse do you think you do best?** Showing I care, listening to the patient and family members, teaching them in their care.
- 5. How long have you been a nurse? With Baptist?** 18 years as a nurse and 18 years with Baptist.
- 6. Is there a past event or person who shaped the way you deal with patients?** Several people have been my mentors: Marilyn Creed, RN, was my nurse manager. She has nursing experience, knowledge and compassion for providing excellent patient care and care for the staff. She has always been a great example to me and has given me direction as a nurse. Ruth Pickens, RN, was my preceptor. I had never worked as a nurse. I was so inexperienced in everything. Ruth worked with me and was patient and kind. She showed me how to provide excellent patient care. She was an excellent role model of what a nurse should be. I can't leave out Christ. As I try daily to live like him and help people see him and his power to heal.
- 7. How does it feel to be recognized as the best of the best by your coworkers and peers?** I have a very special group of people I work with. This is the best team around! The hard work of the PCA's, AUC's , nurses and nurse manager make it possible to spend special time with patients and families. I appreciate the support of my peers and coworkers and feel honored that they selected me for this award.



Baptist colleagues' new shade of blue

During Hospital Week, new T-shirts were distributed to Baptist colleagues systemwide. Above, colleagues at Baptist Memorial Hospital-Huntingdon pose outside with the new look.



Stacie Herrell, left, of Union City, received a demonstration of the Balance Master system, which is used to retrain balance, from Baptist Rehabilitation physical therapist Amy Davis during a recent open house in the Tower Conference Room of Baptist Memorial Hospital-Union City.

The hospital hosted the open house for the community as part of its celebration of National Hospital Week.

Some of the services available at the hospital were highlighted through displays and demonstrations, with free information offered on counseling services,

hospice care, the hospitalist program, medication safety, physical therapy, radiology services, cancer treatment, fitness and wellness, nutrition, maternity services and sleep disorders.

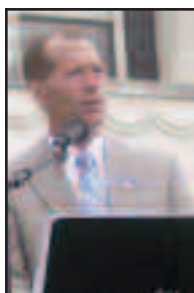
Guests enjoyed giveaways, refreshments and registering for door prizes.

Hospital officials said the event was well attended throughout the day.

Derick Ziegler, administrator and CEO at Baptist Union City,

was the featured speaker at the National Day of Prayer service at the Obion County Courthouse May 7.

Ziegler discussed the importance and power of prayer before scores of citizens who attended in support of local and state leaders; national leaders; military personnel; and families, schools and churches.



Derick Ziegler

Joann Norris, RN, second floor charge nurse at Baptist Booneville, just happened to be at the right place at the right time.



Joann Norris

In a letter sent to Eddie Barnett, director of Prentiss County Rural Metro EMS, and Larkin Kennedy, administrator and CEO of Baptist Booneville, Bruce Sabatino, MD, commended Norris and the EMS responders for quick action to save the life of a 13-year-old who suffered sudden cardiac collapse while playing basketball.

After seeing the boy collapse while going for a layup, Norris found him unresponsive and experiencing seizure activity, the letter said.

She called 911 immediately and began CPR.

First responders David Binford and Greg Davidson were nearby, and diagnosed the boy's fatal arrhythmia and administered a counter-shock that restored a normal heart rhythm.

Although still unconscious, the boy regained a pulse and breathing and was transported to the Baptist Booneville ED, where he was stabilized before being sent for further treatment, the letter stated.

The Baptist Huntingdon Relay for Life Team recently hosted its first annual celebrity waiter dinner, raising more than \$5,400 for the American Cancer Society.

More than 100 from the community attended, and were served by such celebrity waiters/waitresses as **Julie Bartholomew**, director of reha-

(Continued on next page)

BBB warns against H1N1 Flu scams

Relying on reports from online security experts, the Better Business Bureau is warning consumers to be on the lookout for fraudulent e-mails and Web sites trying to take advantage of the current swine flu outbreak.

"Scammers read newspapers, watch TV and surf the Internet, and they know that by using a hook from the day's top headlines they'll be able to catch lots of fish," said Randy Hutchinson, BBB President. "Right now, issues associated with swine flu and a potential pandemic are of global interest, and that means scammers have a very large pond to go phishing in."

According to McAfee Avert Labs, an online security company, spammers began pumping out e-mails as soon as the first accounts of swine flu were being reported in the news, accounting for two percent of all spam messages. The messages include such subject lines as, "Madonna caught swine flu!" and "Swine flu in Hollywood!" So far the spammers have been advertising drugs and sending links to online pharmacies, using a network of compromised PCs to distribute their messages.

According to F-Secure Corp., another online security company, more than 250 Web sites with the term "swine flu" have been registered within the first few days following the announcement of the outbreak, and they predict that the scam artists are preparing to use such Web sites in a variety of different online scams.

F-Secure also reports that one Web site is already selling a

(Continued on next page)

Scams (Continued from page 3)

On the web

www.cdc.gov/swineflu
 http://health.state.tn.us/
 http://www.mississippi.gov/index.jsp
 http://www.healtharkansas.com/

"Swine Flu Survival Guide" PDF for \$19.95. Other swine flu pandemic preparedness kits offered online include a variety of items such as gloves, mask, disposable coveralls, etc. Consumers should be aware that a kit can't give you 100 percent protection from this or any other flu.

The BBB of the Mid-South has not been contacted by any local victims of swine flu scams. However, consumers should heed the following advice to avoid becoming a victim of these scams:

- Avoid opening e-mail from an unknown source and do not click on any links in the body of the e-mail or open any attachments. Instead, delete the e-mail or report it to the Federal Trade Commission by forwarding the e-mail to spam@uce.gov.

- Don't believe online offers for vaccinations against swine flu because a vaccine does not exist.

- Make sure your anti-virus and anti-spyware software is up to date and all operating system security patches have been installed. If your computer becomes infected as the result of a spam e-mail about swine flu, you can report it to the Internet Crime Complaint Center at www.ic3.gov.

Consumers are encouraged to check the Centers for Disease Control and Prevention Web site and their State Department of Health Web sites for updates and further information concerning this issue.

Recovering from a miracle

Germantown patient thankful for little angel

Timing is everything.

Jeremy Gilliand was driving near his Senatobia, Miss., home when he went off the road.

"I don't know whether it was an animal in the road or something, but I left the road," Gilliand said from his hospital room at Baptist Rehabilitation-Germantown.

According to a report from the Senatobia Fire Department, Gilliand drove off a bridge on Harmon Road and was undiscovered for nearly 24 hours. Gilliand, in a Ford pickup, hit the opposite embankment and fell about 40 feet. He said he was about two miles from home.

The next afternoon, he was discovered by a youth and his grandmother, who were riding

(Continued on page 5)



Occupational therapist Stacey Castleberry, left, helps Jeremy Gilliand go over the exercises he is to do at home after his release from Baptist Rehabilitation-Germantown.



At left, Gilliand's truck in the canal the afternoon following the accident. Gilliand spent nearly 24 hours in the truck before being spotted by Logan Bailey. Photo courtesy of Tate County Democrat and Senatobia Fire Department.

NEWS AND EVENTS, CONTINUED



bilitation; **Dr. Lee Carter**, family practice; **Dr. Scott Portis**, ED medical director; **Susan Breeden**, administrator and CEO; and, sitting, **Dr. Kevin Wheatley**, hospitalist. Baptist waiters/waitresses not pictured were Dr. Wendy Cran-Carty and Mike Cary, member of the board of directors.



Kim Sanders

Kim Sanders, RN, recently was named chief nursing officer at **Baptist Memorial Hospital-Huntingdon**.

Sanders has been with Baptist since 2003, serving as a nurse manager.

She earned a Bachelor of Science degree in nursing from Union University and she is pursuing a Masters degree in nursing administration from Union.



At the annual **Baptist Memorial Hospital-Lauderdale League Awards Breakfast** on April 28 in celebration of National Volunteer Week, **Janie Sweat**, chief nursing officer, was presented with a big check for 2,382 hours. **Carolyn Stanley**, left, league president, is pictured with Sweat as she presents the check representing the number of hours served by volunteers for 2008.



Maintaining the serenity of the Serenity Trail

Members of Bellevue Loves Memphis from Bellevue Baptist Church, help landscape the Serenity Trail at Baptist Memorial Hospital-Memphis recently.

CMDA continues character of Christ in mission

(Continued from page 1)

glorify God by living out the character of Christ in their homes, practices, communities and around the world; pursuing professional competence and Christ-like compassion in their daily work; influencing their families, colleagues, and patients toward a right relationship with Jesus Christ; and advancing Biblical principles in bioethics and health to the Church and society.

Some of the medical supplies for the mission were supplied by CrossLink International's Memphis chapter, which receives regular donations from Baptist

hospitals systemwide. Baptist also supports the local CMDA chapter.

"We had nearly 50 health care professionals, including doctors, dentists, physical therapists, nurses and pharmacists there along with assistants and students," Cattau said about the mission. "It was a great experience for me. Our team offered a primary care clinic, but we had local physicians who were able to expedite the referral of patients who had more serious medical issues."

"Baptist supports ministries that reach out to make a difference," said Stephen C. Reynolds, presi-

dent and CEO of Baptist Memorial Health Care. "Dr. Cattau, along with the many other Baptist physician partners and colleagues who take time to spread the word of Christ, has truly answered Christ's call to serve."

Cattau said the CMDA mission gave him an opportunity to work with others outside his immediate church.

"I've been a member of CMDA for a few years, but didn't participate in the missions," Cattau said. "But CMDA is doing great work and I was blessed by this opportunity to serve with them."

Students participate in medical mission

(Continued from page 1)

Lewis, founder of SEEDS Ministries, who brought two physicians and three registered nurses. Faculty from the College included Donna Mars, assistant professor of nuclear medicine technology; and Dr. Christopher Church, professor of philosophy and religion.

During the month of March, participants were busy ordering passports and updating needed

immunizations. Several fundraisers were held to help with travel expenses for students on the team.

In addition, the Baptist Memorial Health Care Foundation awarded grants to students based on financial need from the Orr-Russwurm Medical Missions Fund Grant, a Christian Medical Missionary scholarship fund. This

grant was made possible by a generous gift from the estate of Dr. William Robert Orr Jr., an Arkansas physician who often participated in medical missionary work.

Before his death in 2005, Orr wanted to establish this medical mission trip fund to help nursing and allied health students pursue medical mission work.

Angel

(Continued from page 1)

an all-terrain vehicle in the area. The youth called 911 and Gilliland, who by some accounts was near death, was rescued and sent to The Med. The youth, Logan Bailey, was out of school and wanted to ride his new four-wheeler. He rode to the canal with his grandmother, where he saw the truck and Gilliland.

"He's my little angel," said Gilliland, who, after being discharged from Baptist Rehab-Germantown, plans a community fish fry.

Gilliland's therapy has been difficult, and he credits his therapists, Debbie Lock, PT; and Ann Lindberg, OT, for his improvement during the past month.

"He's really come a long way," Lock said. "He's been given exercises to continue at home and he should make a nice comeback."

"I woke up in the hospital with tubes coming out of everywhere," Gilliland said. "When I came here, I couldn't walk but a step or two. Now, I'm walking a lot more and getting my strength back up. Thanks to the therapists challenging me every day, I've come a long way."

A & B

(Continued from page 1)

the Foundation program or cause of their choosing. To learn more about the Foundation, visit www.bmhgiving.org. Colleagues who give to the Foundation this year will receive a 'green' reusable shopping bag.

"Foundation programs affect and benefit so many people in the Mid-South, including our fellow colleagues," said Scott Fountain, senior vice president and chief development officer for the Foundation. "From training for students, advances in patient care technology and financial help to those who need it, your contributions to the Foundation make all of that possible. We are so grateful for the generosity of our colleagues, and strive to be the best stewards possible for the investments they place in our trust."

CLASSIFIED ADS

MISCELLANEOUS

- Wii fit package, brand new, never opened, \$50. Call 901-848-5399.
- Olhausen pool table, French style, cherry finish, eight foot full slate table with premier set of Belgian balls, dufferin maple house cue, four more cues, bridge stick, wall rack, two-piece imported, full dust cover, triangle rack, excellent condition, \$1,700. Call 901-412-9615.
- Sears treadmill for sale, good condition. Call 901-454-0305.
- Snow white off-shoulder wedding dress, intricate beaded embroidery, full lines, long lace cut out hem and chapel train, satin rose detail in back, worn once, size 6, \$200. Call 901-485-3347.
- Cyclone rake with 5 hp motor for riding mowers, very good condition, \$500. Call 901-734-2012.
- Woman's new Harley Davidson black leather vest, logo stitched on back, black stitching, woman's size large, \$50. call 901-604-3760.
- Hay for sale, round or square bales, will deliver or pick up. Call Lester at 901-212-0073.
- Upright piano, oak, excellent condition, \$500. Call 901-489-8440.
- Set of wireless landline telephones, \$10. Call 901-355-6410.
- Grayco 3-in-one baby stroller, includes stroller, car seat and base, navy and white, perfect condition, \$90. E-mail ann3452@bellsouth.net.
- Regal Kitchen Pro collection bread maker with cookbook, like new, \$75; Taber's Medical Dictionary, 19th edition, \$29; CPR prompt home training set with infant and adult mannequins, used for EMT training, \$45. Call 901-488-5183.
- Onkyo receiver, new in box, \$200. Call 901-365-0456.
- Baptist watch, excellent condition, given for award for years at Baptist. Call 901-605-3865.
- Bumper pool table, excellent condition, \$500. Call 901-494-1237.
- New Powertech weight bench with squat rack, leg extension and curl attachment, 330 pounds of weights, incline/decline bench, \$550. Call 901-574-2153.

HOUSEHOLD

- Full size wood loft bed with twin trundle, student desk with chest of drawers on one side, closet-bench seat on other side, full and twin mattresses included, delivery and setup included, \$1,200 OBO. Call 901-465-0687.
- Dining room table with glass top, seats six, chairs have been reupholstered and have clear plastic covering, \$175. Call 662-302-0270.
- Bunk bed, solid maple, study desk with two chests of drawers in one ensemble, sturdy ladder, great condition, two Sealy twin mattresses that were bought separately, one never used, \$500. Call 901-485-3347.
- General Electric side-by-side refrigerator-freezer with in-door ice and water dispenser, white, like new, \$450. Call 901-626-7632.
- California king with six drawers under bed, two tulip

lights and oval mirror on headboard, mattress, \$150; two white pedestals for front-load washer and dryer, \$200. Call 901-734-2012.

- Italian accent pieces/furniture, gold wheat sheaf coffee table with glass top, \$345; gold bird cage stand attached, marble base, accented with flowers, \$397; fern stand twisted gold roped legs, 15-inch glass top with marble base, \$231, many others. Contact jrdot@bellsouth.net for information.
- Oak oval table and four chairs, \$125; Hunter fan with schoolhouse globe, very sturdy, 52-inch, \$150. Call 901-683-6931.
- 52-inch Hunter fan with schoolhouse globe, sturdy, \$150. Call 901-683-6931.

WANTED

- 10 barstools wanted, must be in good shape and reasonably priced. Call 901-277-4785.
- Single, Christian female seeks same to share home, private space available, upstairs, three bedrooms and bath, kitchen and laundry privileges. Call 662-429-1068.

REAL ESTATE

- Cordova home for sale, 4 BR/2.5 BA, great room, remodeled kitchen with ceramic tile floor, new appliances, new roof, painted inside and out, landscaped yard, new air unit, \$149,000. Call 901-233-0438.
- Home for rent at 4322 Elmridge, 3 BR/1 BA, eat-in kitchen, fenced yard, central heat and air, carpet, w/d connection, \$675 per month with \$400 deposit, no pets. Call 901-626-1435.
- Horn Lake home for rent at 3140 Edenshire, 3 BR/2 BA, fenced back yard, wood deck, \$650 deposit and \$835 per month. Call 901-301-1718 and e-mail rg@comcast.net.
- Home for rent in Somerville, 3 bedroom, large yard, \$730 per month, credit check, one month rent deposit. Call 901-412-2897.
- Tate County home and 22 acres for sale, large shop with separate driveway, house is 3,600 square feet, recently remodeled kitchen, \$300,000. Call 662-501-0758.
- Southaven home for rent at 890 Snow Pine Cove, 3 BR/2.5 BA, two-car garage, \$1,300 per month plus deposit. Call 901-831-9878.
- Condominium in Chatam Village on Park Ave., 2 BR/1.5 BA, gated community, clubhouse and pool access, \$95,000. Call 901-574-2152.
- Scenic lots for sale in Perry County, Tenn., between six and 24 acres each, gravel drives and gates, \$49,900 each lot. Call 901-262-3411.
- Destin, Fla., condominium, one bedroom, on par-3 golf course, sleeps 4, \$200 deposit, weekly rental \$954.60. Call 901-382-4841.
- Home for rent at 1903 Alta Vista Drive, 3 BR/1 BA, carpet in bedrooms, tile kitchen and bath, ceiling fans, carport, \$650 per month, \$300 deposit. Call 901-357-3277.
- House for rent at 312 Leonora, 3 BR/2 BA, living room, den, landscaped yard, fenced back yard, fenced dog pen, carport and storage room, refurbished kitchen. Call Lester Graves at 901-685-7342.

CLASSIFIED AD GUIDELINES

Classified ads are published as a service to Baptist colleagues in each edition of Baptist Leader. Submissions for each edition of Leader must be received by 2 p.m. on the preceding Monday. For any ad, please include work number and location for verification purposes and **one non-work number for publication**.

Ads run at least once, and will run as space allows. New ads will receive preference over repeat ads. Services and goods offered must be legitimate and legal, and Leader cannot be responsible for misprints, omissions or false advertising. All ads may be rejected at the discretion of Baptist Memorial Health Care administration or the editor.

Ads for services and goods must be offered or wanted by Baptist colleagues, individuals or independent contractors. Franchises, other non-independent services, medical, dental and other clinical services are not eligible for classified ads.

To submit an ad, e-mail leader@bmhcc.org or fax to 901-227-3516.

SERVICES

- Home renovations, room additions, decks, fencing, electrical, plumbing, carpet and tile installation. Call Dan at 901-626-7159 for a free estimate.
- Baptist employee special – full-day guided fishing trip for 1-2 anglers, includes all equipment, cold drinks and snacks. Call Keith with Reel Time Guide Service at 901-921-7360.
- Photography for weddings, engagements, family and baby portraits, 20 percent discount for Baptist employees. Call 901-828-1223 or visit www.kylekurlick.com.

PETS

- Free kittens to good home, six weeks old. Call 901-428-6048.
- Chesapeake Bay retriever puppies for sale, one male, one female, \$350; first set of shots given. Call 901-486-5425.

VEHICLES

- 2001 Dodge Intrepid, runs excellent, \$2,800 OBO. Call 901-337-3031 and ask for Sharika.
- 2008 Honda Fit sport, blue, 8,700 miles, auto, power, remote, alloy wheels, warranty, HealthNet FCU loans 100 percent, \$14,300. Call 901-603-1678.

Baptist Leader, Vol. 73, No. 12, June 5, 2009

Editor: Chris Pennington
phone (901) 227-3504; chris.pennington@bmhcc.org

Photographer: Greg Campbell
phone (901) 227-3510; greg.campbell@bmhcc.org

Baptist Leader is published by Corporate Communications, Baptist Memorial Health Care Corp., 350 N. Humphreys Blvd., Memphis, Tenn. 38120. It is distributed bi-weekly to all BMHCC entities in the Mid-South. **Deadline for article submissions and classified ads is 2 p.m. Monday prior to publication. Send article ideas and submissions as well as classified ads to leader@bmhcc.org or fax to (901) 227-3516.** Baptist Leader is printed on recycled paper.